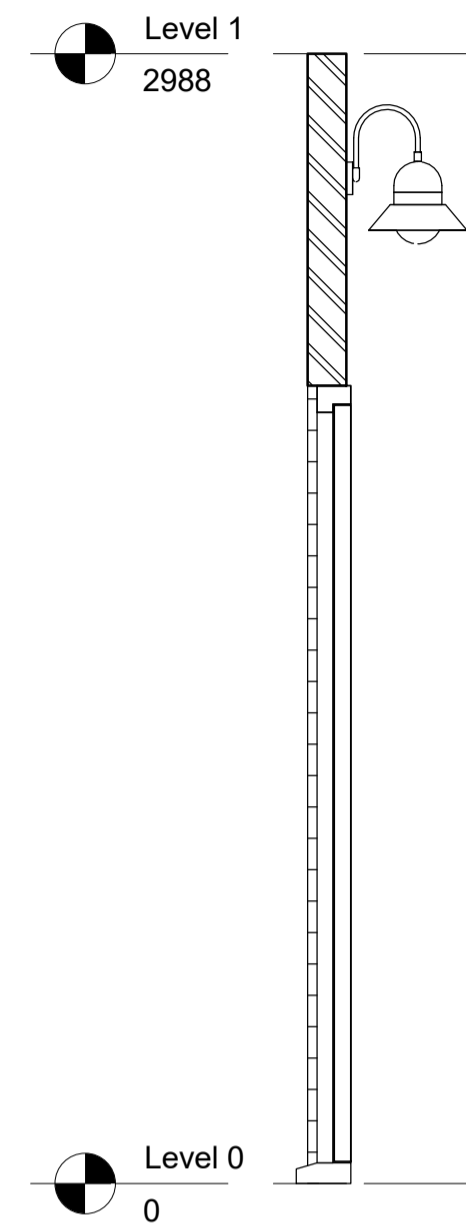
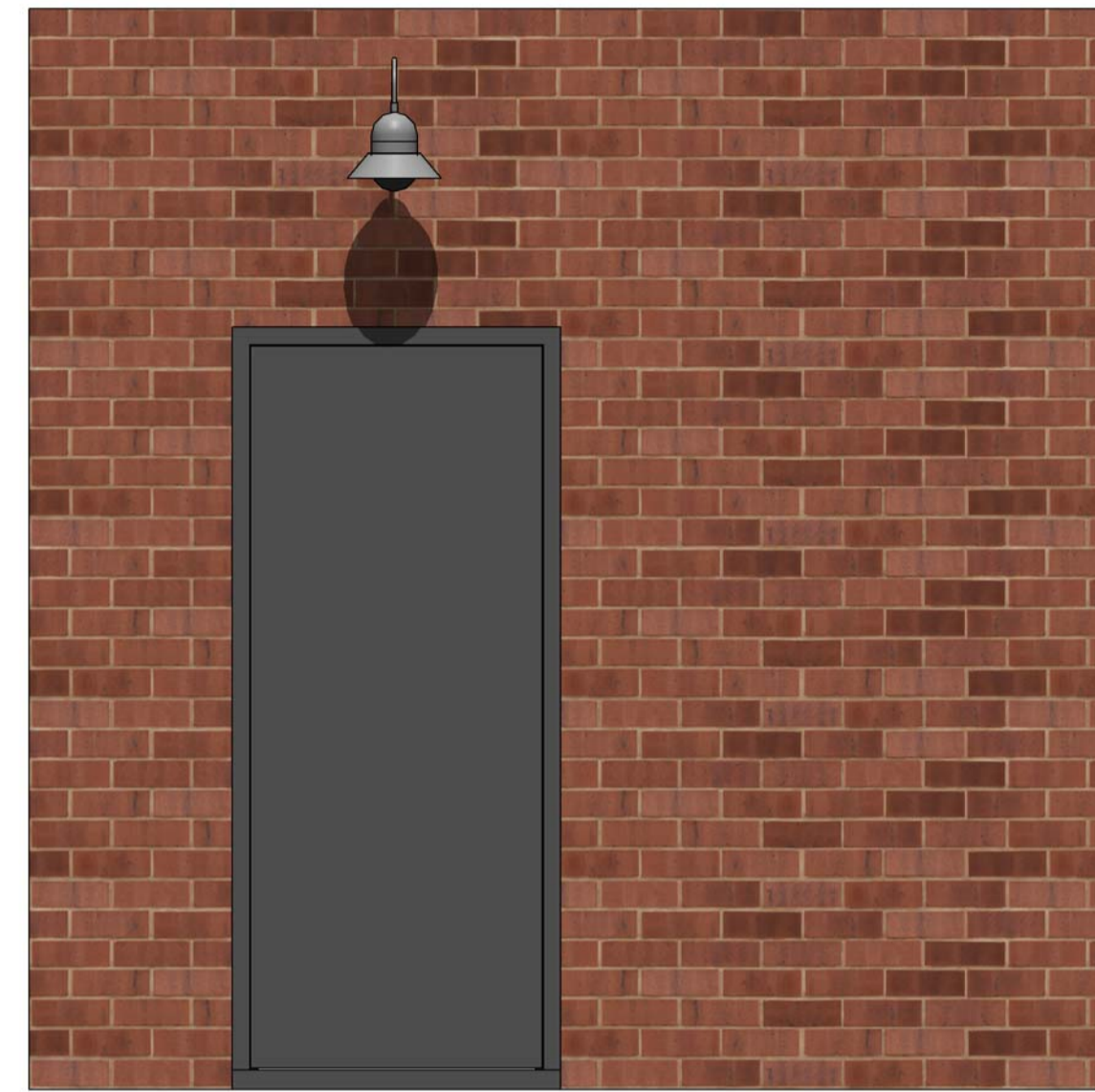


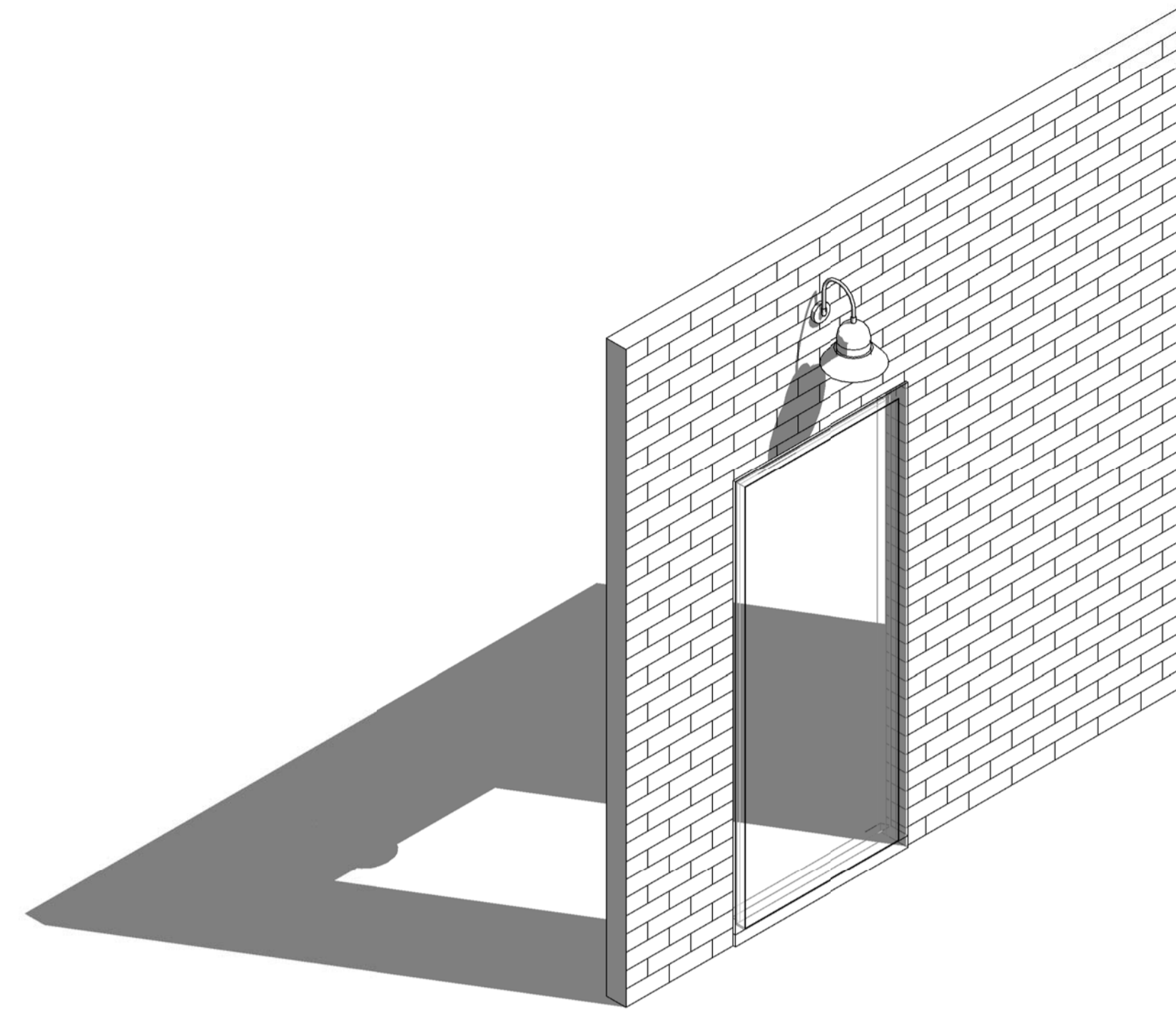
1 South - Graphic Display- Hidden Line
1 : 20



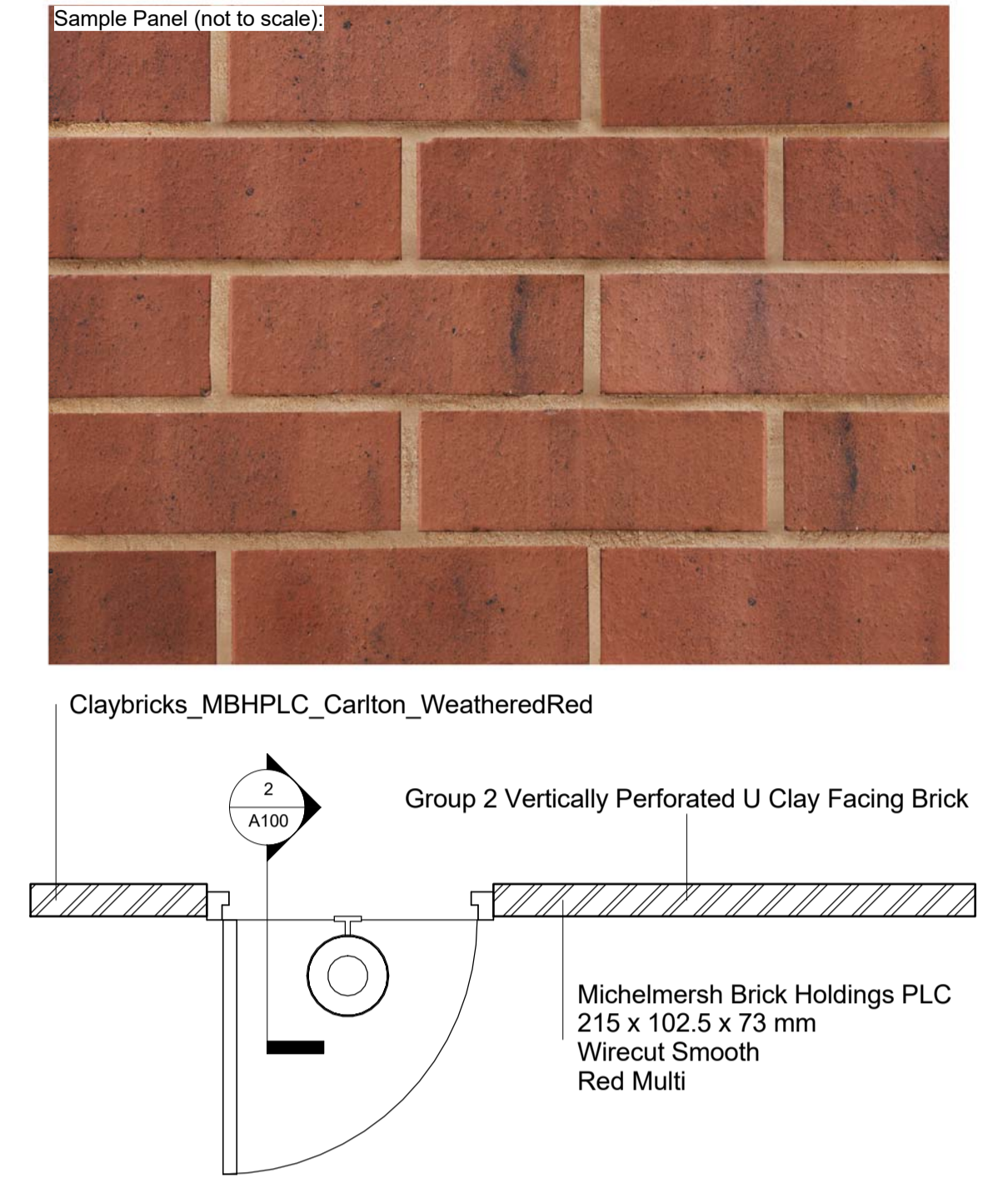
2 Section 1
1 : 20



3 South - Graphic Display- Realistic



4 3D Ortho



5 Level 0
1 : 20

Wall Material Takeoff 1													
Family and Type	Material: Area	Material: Volume	Material: Width	Assembly Description	Material: Mtrl_ModelReference	Material: Mtrl_ModelNumber	Material: Mtrl_Manufacturer	Material: Mtrl_ManufacturerAddress	Material: Mtrl_ManufacturerTelephone	Material: Mtrl_ManufacturerFax	Material: Mtrl_ManufacturerPlant	Material: Mtrl_BrickDescription	Material: Mtrl_BrickType
Basic Wall: Claybricks_MBHPLC_Carlton_WeatheredRed	7 m ²	0.72 m ³	102.5	Ext. Wall - Brick (Single Wythe)	MBH PLC Carlton 73mm Weathered Red	MB-0009-WEAT-SM-B-1 G	Michelmersh Brick Holdings PLC	Michelmersh Brick Holdings PLC, Freshfield Lane, Danehill, Sussex, RH17 7HH	0844 931 0022	0844 931 0021	Carlton	Vertically Perforated Clay Facing Brick	U (Unprotected)

Wall Material Takeoff 2												
Family and Type	Material: Area	Material: Volume	Material: Width	Material: Mtrl_Configuration	Material: Mtrl_WorkSizeLengthXWidthXHeight	Material: Mtrl_CompressiveStrengthCategory	Material: Mtrl_CompressiveStrengthMeanCompressiveStrengthMinimum	Material: Mtrl_DensityGrossDry	Material: Mtrl_DensityNetDry	Material: Mtrl_DensityTolerance	Material: Mtrl_DurabilityDesignation	Material: Mtrl_InitialSuctionRate
Basic Wall: Claybricks_MBHPLC_Carlton_WeatheredRed	7 m ²	0.72 m ³	102.5	Group 2	215 x 102.5 x 73 mm	II	40.0 (N/mm ²)	1500 kg/m ³	2,100.00 kg/m ³	D1	F2	1.5

Wall Material Takeoff 3												
Family and Type	Material: Area	Material: Volume	Material: Width	Material: Mtrl_ReactionToFire	Material: Mtrl_SolubleSaltsCategory	Material: Mtrl_ThermalConductivity	Material: Mtrl_ThermalResistance	Material: Mtrl_TolerancesMeanValue	Material: Mtrl_TolerancesRange	Material: Mtrl_WaterAbsorption	Material: Mtrl_WaterVapourPermeability	Material: Mtrl_Material
Basic Wall: Claybricks_MBHPLC_Carlton_WeatheredRed	7 m ²	0.72 m ³	102.5	Class A1	S2	0.69 W/(m·K)	0.15	T2	R1	10.00%	50/100	Fired Clay

Wall Material Takeoff 4															
Family and Type	Material: Area	Material: Volume	Material: Width	Material: Mtrl_Shape	Material: Mtrl_Color	Material: Mtrl_Finish	Material: Mtrl_ClassificationName	Material: Mtrl_ClassificationValue	Material: Mtrl_ReferencedStandard	Material: Mtrl_AssetType	Material: Mtrl_DocumentationLiterature	Material: Mtrl_CreatedOn	Material: Mtrl_NBSReference	Material: Mtrl_NBSDescription	Material: Mtrl_BIMObjectName
Basic Wall: Claybricks_MBHPLC_Carlton_WeatheredRed	7 m ²	0.72 m ³	102.5	Rectangular Prism	Red Multi	Wirecut Smooth	Uniclass2015	Pr_20_93_52_15	BS EN 771-1	Fixed	www.mbhplc.co.uk/bim	Version 3 in 2017 (Revit 2013 software)	45-80-50/316	Clay Bricks	MBHPLC_Wall_Claybricks_Carlton_73mmWeatheredRed-v3



www.mbhplc.co.uk

Michelmersh Brick Holdings PLC
Freshfield Lane, Danehill, Sussex,
RH17 7HH

Tel: 0844 931 0022
Fax: 0844 931 0021
E-mail: sales@mbhplc.co.uk

Owner

Project Name

MBH PLC Carlton 73mm
Weathered Red

Project number **Project Number**

Date **Issue Date**

Drawn by **Author**

Checked by **Checker**

A100

Scale 1 : 20